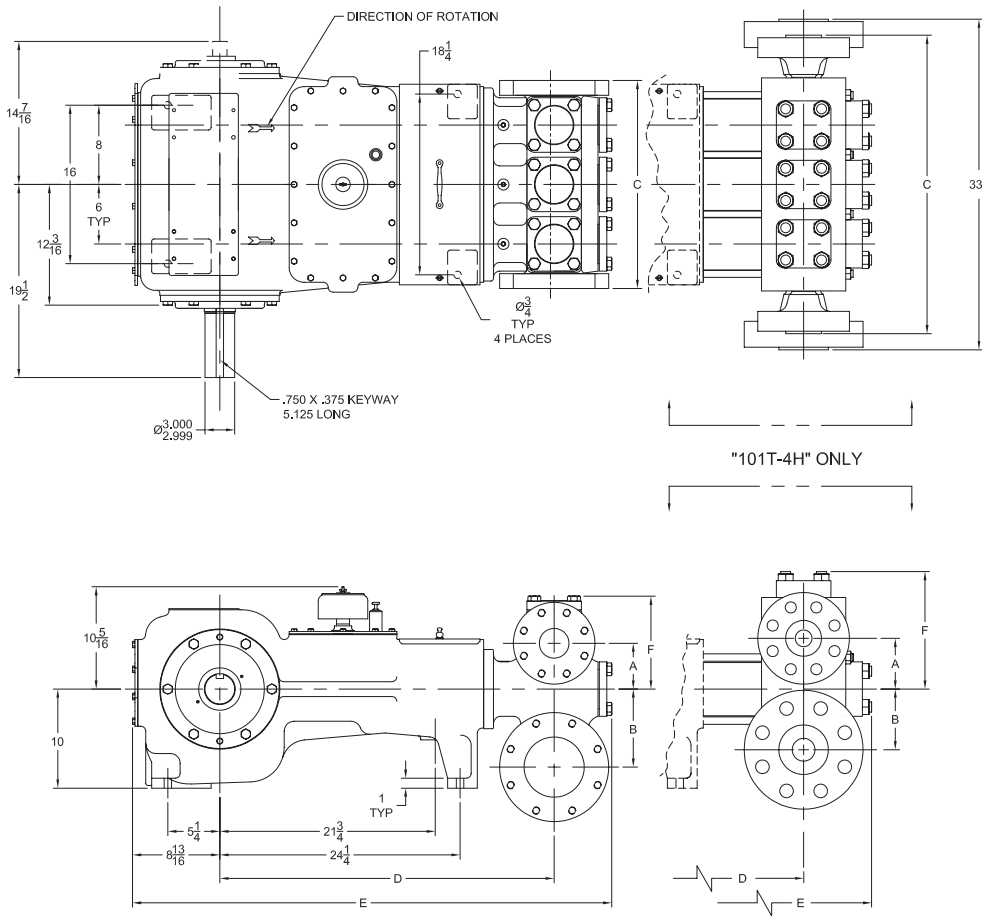


101T-4 Triplex Plunger Pump



Specifications

Pump Size:

maximum plunger size x stroke length, in.(mm):
3.375 x 4.500 (85.725 x 114.3)

Rated BHP (kW) at 400 RPM: 100 (75)

Rated plunger load, pounds (kg): 6600 (2994)

Maximum discharge pressure: psi (kPa)

"L" model: 1220 (8408)

"M" model: 2744 (18919)

"H" model: 5378 (37081)

Crankshaft extension:

Diameter, in.(mm): 3.000 (95.25)

Length, in.(mm): 5.13 (130.3)

Keyway width x depth, in.(mm):

3/4 x 3/8 (19.1 x 9.5)

Maximum recommended sheave diameter,
in.(mm): 50 (1270)

For larger sizes: **Contact Factory**

Pinion shaft extension,

if gear reducer is supplied, in.(mm)

For belt or chain drive: **Contact Factory**

For direct drive: Diameter: 2.000 (50.8)

Length: 4.25 (108.0)

Keyway width x depth:

1/2 x 1/4 (12.70 x 6.35)

Accessory gear reduction unit:

3.00:1, 3.12:1, 3.23:1, 3.36:1, 3.49:1,

3.62:1, 3.78:1, 3.94:1, 4.11:1, 4.29:1,

4.48:1, 4.69:1, 4.93:1, 5.17:1

Oil Capacity, gallons (L)

Crankcase: 6 (22.71)

Gear Reducer - varies with ratio:

1.25 to 1.50 (4.73 to 5.68)

Weight, pump only on

wood shipping skids, pounds (kg)

"L" model: 1740 (649.4)

"M" model: 1600 (597.2)

"H" model: 1820 (679.3)

Standard Materials for Fluid Ends:

"L" model

Cast Duplex Stainless Steel

Cast Nickel-Aluminium-Bronze

Forged/Plate Carbon Steel

"M" model

Cast Duplex Stainless Steel

Cast Nickel-Aluminium-Bronze

Forged/Plate Carbon Steel

"H" model

Forged/Plate Carbon Steel

Pump Model	Flange Connections		Dimensions (Inches)					
	Discharge Connection Sizes	Suction Connection Sizes	A	B	C	D	E	F
101T-4L	3 ANSI 600 FF	6 ANSI 150 FF	4 5/8	7 7/8	21	33 3/4	48 3/8	9 3/8
101T-4M	2 ANSI 1500 FF	4 ANSI 300 FF	5 1/16	6 3/16	21	33 3/8	47 9/16	9
101T-4H	2 ANSI 2500 RJ	3 ANSI 2500 RJ	5 1/8	6 1/8	30 1/8	36 3/4	52 7/16	11 7/8

101T-4 Triplex Plunger Pump

Performance Data

PUMP	English Units					50 RPM		150 RPM		250 RPM		300 RPM		350 RPM		400 RPM	
	Plunger Dia. In.	Plunger Area Sq. In.	BPD per RPM	GPM per RPM	Max. Press. PSI	BPD	GPM	BPD	GPM	BPD	GPM	BPD	GPM	BPD	GPM	BPD	GPM
101T-4L (T100-4)	3.375	8.9462	17.9255	0.5228	738	897	26.1	2689	78.4	4482	130.7	5378	156.8	6274	183.0	7171	209.1
	3.250	8.2958	16.6223	0.4848	796	832	24.2	2494	72.7	4156	121.2	4987	145.4	5818	169.7	6649	193.9
	3.125	7.6699	15.3682	0.4482	861	769	22.4	2306	67.2	3843	112.1	4611	134.5	5379	156.9	6148	179.3
	3.000	7.0686	14.1634	0.4131	934	709	20.7	2125	62.0	3541	103.3	4250	123.9	4958	144.6	5666	165.2
	2.875	6.4918	13.0077	0.3794	1017	651	19.0	1952	56.9	3252	94.8	3903	113.8	4553	132.8	5204	151.8
	2.750	5.9396	11.9012	0.3471	1111	596	17.4	1786	52.1	2976	86.8	3571	104.1	4166	121.5	4761	138.8
	2.625	5.4119	10.8438	0.3163	1220	543	15.8	1627	47.4	2711	79.1	3254	94.9	3796	110.7	4338	126.5
101T-4M (T100-3)	2.500	4.9087	9.8357	0.2869	1345	492	14.3	1476	43.0	2459	71.7	2951	86.1	3443	100.4	3935	114.7
	2.375	4.4301	8.8767	0.2589	1490	444	12.9	1332	38.8	2220	64.7	2664	77.7	3107	90.6	3551	103.6
	2.250	3.9761	7.9669	0.2324	1660	399	11.6	1196	34.9	1992	58.1	2391	69.7	2789	81.3	3187	92.9
	2.125	3.5466	7.1063	0.2073	1861	356	10.4	1066	31.1	1777	51.8	2132	62.2	2488	72.5	2843	82.9
	2.000	3.1416	6.2948	0.1836	2101	315	9.2	945	27.5	1574	45.9	1889	55.1	2204	64.3	2518	73.4
	1.875	2.7612	5.5326	0.1614	2390	277	8.1	830	24.2	1384	40.3	1660	48.4	1937	56.5	2214	64.5
	1.750	2.4053	4.8195	0.1406	2744	241	7.0	723	21.1	1205	35.1	1446	42.2	1687	49.2	1928	56.2
101T-4H (T100-2)	1.625	2.0739	4.1556	0.1212	3182	208	6.1	624	18.2	1039	30.3	1247	36.4	1455	42.4	1663	48.5
	1.500	1.7671	3.5408	0.1033	3735	178	5.2	532	15.5	886	25.8	1063	31.0	1240	36.1	1417	41.3
	1.375	1.4849	2.9753	0.0868	4445	149	4.3	447	13.0	744	21.7	893	26.0	1042	30.4	1191	34.7
	1.250	1.2272	2.4589	0.0717	5378	123	3.6	369	10.8	615	17.9	738	21.5	861	25.1	984	28.7
	Brake Horsepower Required					13		38		63		75		88		100	

PUMP	Metric Units					50 RPM		150 RPM		250 RPM		300 RPM		350 RPM		400 RPM	
	Plunger Dia. mm	Plunger Area cm ²	M ³ /Hr per RPM	L/Sec. per RPM	Max. Press. kPa	M ³ /Hr	L/Sec.	M ³ /Hr	L/Sec.	M ³ /Hr	L/Sec.	M ³ /Hr	L/Sec.	M ³ /Hr	L/Sec.	M ³ /Hr	L/Sec.
101T-4L (T100-4)	86	57.717	0.1187	0.0330	5087	5.9	1.6	17.8	4.9	29.7	8.2	35.6	9.9	41.6	11.5	47.5	13.2
	83	53.521	0.1101	0.0306	5485	5.5	1.5	16.5	4.6	27.5	7.6	33.0	9.2	38.5	10.7	44.0	12.2
	79	49.483	0.1018	0.0283	5933	5.1	1.4	15.3	4.2	25.4	7.1	30.5	8.5	35.6	9.9	40.7	11.3
	76	45.604	0.0938	0.0261	6438	4.7	1.3	14.1	3.9	23.5	6.5	28.1	7.8	32.8	9.1	37.5	10.4
	73	41.883	0.0862	0.0239	7010	4.3	1.2	12.9	3.6	21.5	6.0	25.8	7.2	30.2	8.4	34.5	9.6
	70	38.320	0.0788	0.0219	7661	3.9	1.1	11.8	3.3	19.7	5.5	23.6	6.6	27.6	7.7	31.5	8.8
	67	34.915	0.0718	0.0200	8408	3.6	1.0	10.8	3.0	18.0	5.0	21.5	6.0	25.1	7.0	28.7	8.0
101T-4M (T100-3)	64	31.669	0.0651	0.0181	9270	3.3	0.90	9.8	2.7	16.3	4.5	19.5	5.4	22.8	6.3	26.1	7.2
	60	28.581	0.0588	0.0163	10272	2.9	0.82	8.8	2.5	14.7	4.1	17.6	4.9	20.6	5.7	23.5	6.5
	57	25.652	0.0528	0.0147	11445	2.6	0.73	7.9	2.2	13.2	3.7	15.8	4.4	18.5	5.1	21.1	5.9
	54	22.881	0.0471	0.0131	12831	2.4	0.65	7.1	2.0	11.8	3.3	14.1	3.9	16.5	4.6	18.8	5.2
	51	20.268	0.0417	0.0116	14485	2.1	0.58	6.3	1.7	10.4	2.9	12.5	3.5	14.6	4.1	16.7	4.6
	48	17.814	0.0366	0.0102	16481	1.8	0.51	5.5	1.5	9.2	2.5	11.0	3.1	12.8	3.6	14.7	4.1
	44	15.518	0.0319	0.0089	18919	1.6	0.44	4.8	1.3	8.0	2.2	9.6	2.7	11.2	3.1	12.8	3.5
101T-4H (T100-2)	41	13.380	0.0275	0.0076	21942	1.4	0.38	4.1	1.1	6.9	1.9	8.3	2.3	9.6	2.7	11.0	3.1
	38	11.401	0.0235	0.0065	25751	1.2	0.33	3.5	1.0	5.9	1.6	7.0	2.0	8.2	2.3	9.4	2.6
	35	9.580	0.0197	0.0055	30646	1.0	0.27	3.0	0.82	4.9	1.4	5.9	1.6	6.9	1.9	7.9	2.2
	32	7.917	0.0163	0.0045	37081	0.8	0.23	2.4	0.68	4.1	1.1	4.9	1.4	5.7	1.6	6.5	1.8
	Kilowatts Required					10		28		47		56		65		75	

For operation below 100 RPM, an auxiliary lubrication system is required.

Volumetric Rate is based on 100% Volumetric Efficiency. Brake Horsepower/Kilowatts Required is based on 90% Mechanical Efficiency.

The information and data on this sheet is accurate to the best of our knowledge and belief, but are intended for general information only. Applications suggested for the materials are described only to help readers make their own evaluations and decisions, and are neither guarantees nor to be construed as express or implied warranties of suitability for these or other applications. National Oilwell makes no warranty either express or implied beyond that stipulated in National Oilwell Standard Terms and Conditions of Sale.

Authorized Distributor:



www.nov.com • mission.sales@nov.com
 10000 Richmond, Houston, Texas 77042
 (713)346-7500 (phone) • (713)346-7366 (fax)