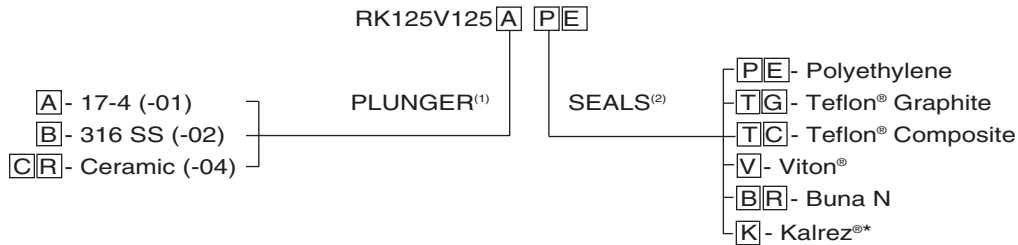




P750V & X SERIES PUMP REPAIR KITS

REPAIR KIT NO. - RK750V400-□□ (1)-□□ (2)

PART NUMBER	DESCRIPTION	QUANTITY
BR-126-90	O-RING-BODY SEAL / BUNA N	1
CV202288	DISCHARGE CHECK VALVE	1
CV202298	SUCTION CHECK VALVE	1
MC400-02BR	PISTON U-CUP / BUNA N	1
PP201943-□□(1)	PISTON / PLUNGER ASSEMBLY	1
SS750V-□□(2)	PLUNGER SEAL SET	1
MC101946	SPRING - PISTON RETURN	1
G32IMI	1 OZ. SILICONE GREASE	1



SEAL KIT NO. - SK750V400-□□ (2)

PART NUMBER	DESCRIPTION	QUANTITY
BR-016	O-RING-STROKE ADJUSTER / BUNA N	1
BR-111	O-RING-STROKE ADJUSTER / BUNA N	1
BR-126-90	I-RING-BODY SEAL / BUNA N	1
MC102174	PISTON GUIDE RING	1
MC400-02BR	PISTON U-CUP / BUNA N	1
SS750V-□□(2)	SEAL SET	1
G321M1	1 OZ. SILICONE GREASE	1

NOTE: The seal repair kits for the X Series plunger pumps are identical to the V Series shown above.

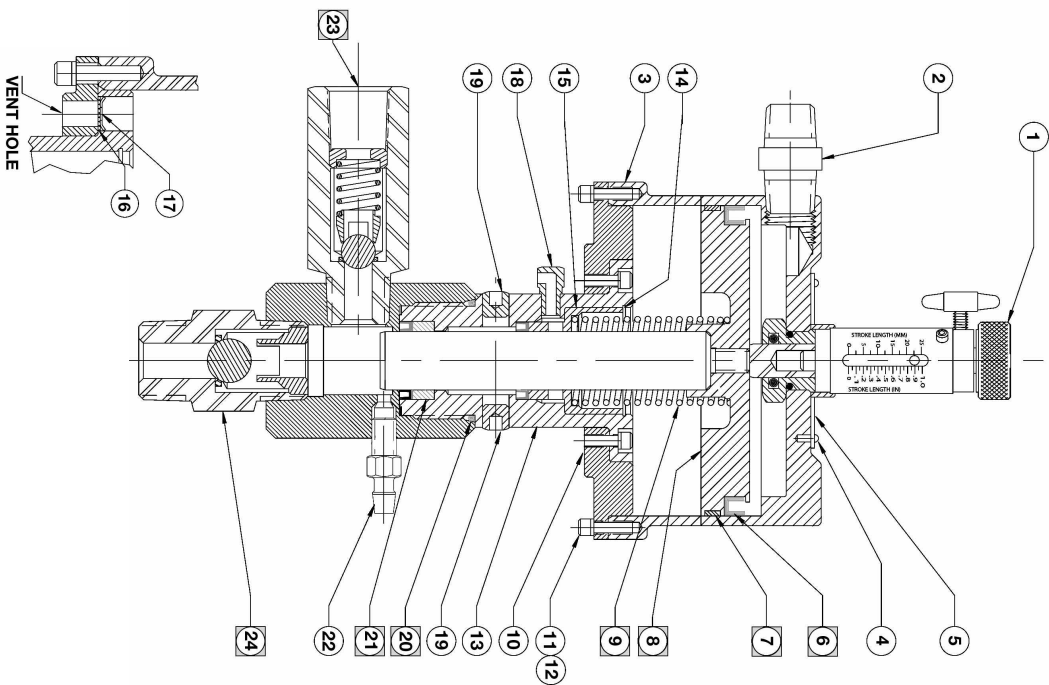
ALTERNATE PLUNGER SEAL SETS		
PART NO.	MATERIAL	PRESSURE RANGE (PSI)
SS750V-PE	Polyethylene (PE)	100-5000
SS750V-V	Viton® (V)	100-750
SS750V-BR	Buna N (BR)	100-750
SS750V-K	Kalrez® (K)	100-750
SS750V-EPR	Ethylene Propylene (EPR)	100-750
SS750V-TC	Teflon® Composite (TC)	100-5000

(1) & (2): To order the proper plunger and seal materials, please indicate the appropriate letter as shown in the example below. The letters following the dash for the piston plunger assembly (PP202219) and plunger seal set (SS125V) will correspond to the material chosen in the repair kit number.

NOTE: The pump repair kits for the X Series plunger pumps are identical to the V Series shown above.

* Equivalent material substitution without notice.

P750V & X SERIES PUMP PARTS LIST



ITEM	DESCRIPTION	NO. REQ. D	P750V/400 P750X/400
1	STROKE ADJUSTER ASSEMBLY	1	SA201941
2	HEX NIPPLE 3/8" NPT	1	HN38316
3	MOTOR CYLINDER	1	MC302172
4	DRIVE SCREWS - DATA PLATE	3	MC2316D
5	DATA PLATE	1	DP201962
6	U-CUP - PISTON, BUNA N	1	MC400-02BR
7	GUIDE RING - PISTON	1	MC102174
8	ASSY - PISTON/PLUNGER (See Note 1)	1	PP201943-__ ⁽¹⁾
9	SPRING - PISTON RETURN	1	MC101946
10	FACE PLATE - CYLINDER	1	MC201961
11	SCREW, 8-32 X 1/2", SS	12	A8212SHCS
12	WASHER, #8 SPLIT LOCK, SS	1	W8L
13	ASSY - BODY & FLUID CYLINDER	1	PP301948
14	RETAINER - SPRING SEAT	1	MC101951
15	SEAT - SPRING	1	MC201952
16	DISC - FILTER, 60 MICRON, SS	4	MC102360
17	RETAINER - FILTER DISC	4	MC102150
18	PLUG - VENT, 1/16" NPT	1	PP102143
19	PLUG - 1/8" NPT	2	OS601
20	O-RING - BODY SEAL, BUNA	1	BR-126-90
21	PLUNGER SEAL SET (NOTE 2)	1	SS750V-__ ⁽²⁾
22	BLEEDER PLUG W/ HOSE BARB	1	BV202139
23	ASSY. - CV8 DISCHARGE CHECK VALVE	1	CV202288
23a	CHECK VALVE BODY	1	CV202290
23b	SPRING	1	CV102046
23c	7/16" BALL - 316SS	1	CV102313
23d	BALL SEAT	1	CV202291
23e	SLEEVE	1	CV202292
23f	O-RING - TEFLON	1	T-012
23g	RETAINER - SLEEVE	1	CV202293
23g	ASSY. - CV12 SUCTION CHECK VALVE	1	CV202298
24	CHECK VALVE BODY	1	CV202299
24a	9/16" BALL - 316SS	1	CV102314
24b	CHECK VALVE BODY	1	CV202300
24c	SLEEVE	1	T-112
24d	O-RING - TEFLON	1	CV202303
24e	RETAINER - SLEEVE	1	
N/A	PUMP REPAIR KIT (See Notes 1&2)	1	RK750V400-__ ⁽²⁾
N/A	SEAL KIT (See NOTE 2)	1	SK750V400-__ ⁽²⁾
N/A	PLUNGER SEAL SET (See Note 2)	1	SS750V-__ ⁽²⁾

Note 1: PLUNGER (item #8) Designate the proper plunger material by adding the proper suffix to the base number:
for 17-4 pH (01), for 316 SS (02), and for Ceramic (04).

Note 2: PLUNGER SEAL SETS (item #21) Designate the proper seal material by adding the proper suffix to the base part number:
for Buna N (BR), Ethylene Polypropylene (EPR), or Kalrez[®] (K), Polyethylene (PE), Teflon[®] Composite (TC), or Viton[®] (V).

REPAIR KITS: The items identified with the symbol are contained in a complete pump repair kit. Controller and relay repair kits must be ordered separately.